



PRINTING TECHNOLOGIES
ENGINEERED IN GERMANY



DISTRIBUTION CENTER PRINTING SOLUTIONS

**MAXIMUM FLEXIBILITY
FOR MISSION CRITICAL
LOGISTICS PROCESSES**

Your Microplex Partner:

FIELD OF APPLICATION

- Just-in-time printing of labels, delivery notes, invoices, reports, ...
- High volume printing on many different materials
- Plug-and-print integration
- Handling of legacy print data and configuration

HIGHLIGHTS / FEATURES / SPECIAL ATTRIBUTES

- Compatible with: IGP, CODE-V, PDF, PCL5, IPDS, ZPL II, etc.
- More than 40 printer emulations
- Hardware handshake via GPIO interface
- Cost- and time efficient printing

EMEA
APAC
MICROPLEX PRINTWARE AG
Panzerstraße 5, 26316 Varel
Phone: +49 4451 91370
E-Mail: sales@microplex.de
www.microplex.de

AMER
Canada
MICROPLEX PRINTWARE CORPORATION
30300 Solon Industrial Pkwy Suite E, Solon, OH 44139
Phone: +1 440-374-2424
E-Mail: info@microplex-usa.com
www.microplex-usa.com

The brand names referred to are the registered trademarks of the respective companies. All figures and details in italics and highlighted in color are optional. Technical data is subject to change. The information contained in this specification sheet refers exclusively to the described details and not to warranted characteristics. No guarantee is assumed. The information do not exempt from the obligation for inspection of each respective individual case. Version 16.02.2022

MAXIMUM FLEXIBILITY FOR MISSION CRITICAL LOGISTICS PROCESSES



Distribution Center Applications

Running a distribution center / fulfillment center is a just-in-time challenge. Printing documents like pick lists, delivery notes, invoices, reports and shipping labels on spot is mission critical. Microplex has a variety of installed applications in distribution and fulfillment centers, including retail hardware stores, pro lumber dealers, and farm stores. Microplex printers are used for shipping applications for retailers and wholesalers shipping and processing groceries, clothes or other goods. A key feature of Microplex printers is our ability to integrate into the existing environment without changing the process or data. At the same time, Microplex has better print quality and lowered operational costs. Legacy aspects, replacement of discontinued (line) printers, and the option to use GPIO to control the workflow are more reasons to choose Microplex. You can choose the right printer for your application across all technologies (thermal transfer, direct thermal, continuous, cut sheet, mobile).

- Printing reports on continuous paper
- Batch printing of picking documents
- Delivery notes just-in-time on cut sheet media
- Shipping labels on mobile thermal printers
- GPIO hardware handshake for controlling the workflow

Continuous Forms

- Print speed from 40 ppm up to 140 ppm
- Print width up to 18 inch
- Integrated stacker
- Laser print quality at 600 dpi
- More than 40 emulations
- Optional GPIO interface

Thermal Transfer Direct Thermal

- Print speed up to 16 inch/s
- Print width up to 8 inch
- Optional GPIO interface
- More than 40 emulations

Cut Sheet

- Print speed up to 120 ppm
- Paper size up to A3 / ledger
- Optional GPIO interface
- More than 40 emulations

Mobile Thermal

- Power supply 100 - 240 V AC
- and/or 12V, 24V, 36V, 48V DC
- Optional mounting plate
- Optional GPIO interface
- Status-Out feedback
- WiFi, RS232, RS422, IEEE 1284 (Centronics)



Continuous forms printer - i.e. SOLID F40



Thermal printer - i.e. logiJET T8-3



Cut sheet printer - i.e. SOLID 50A3-3



Mobile thermal printer - i.e. logiJET TM8

Application Examples

- Replacing old IBM® InfoPrint printers with modern print technology from Microplex. Plug-and-print without changing the application data for printing shelf price labels, order picking labels and retail labels.
- Plug-and-print replacement of outdated line matrix printers to improve print quality, speed and lower the noise level for printing freezer labels, outdoor retail labels and case labels using existing print data like CODE-V or IGP.
- Integration of cut sheet printers with a fast first page via GPIO control into automated commissioning lines to improve the quality of the output and increase the security level of the workflow.
- Printing green bar reports on continuous paper according to audit requirements so no alterations or changes can be made.
- Replacement of thermal printers to continuous laser printers using the existing thermal language, eg. IGP for printing shelf price labels, order lists or case labels.
- Printing grocery store labels out of a SAP® environment without changing the application as printers can be easily integrated plug-and-print.

Plug-and-Print Configuration Options

Microplex printers with their Multi Intelligence Controller have a variety of configuration options and can thus be individually adapted to the intended application. In addition to the feedback via SNMP and status-out, the Microplex printers can be very conveniently integrated into a WiFi and administered.

- Monitor printer status via SNMP (fleet management)
- Individual feedback via the data channel (status-out)
- User-friendly configuration via web panel
- Modern WiFi interface with all current protocols, security standards and authentication standards (802.1x)

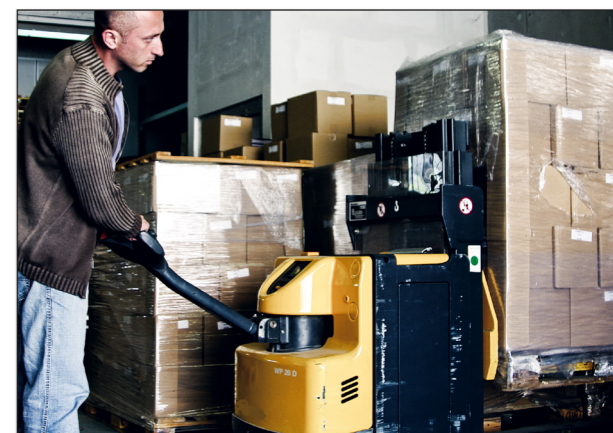
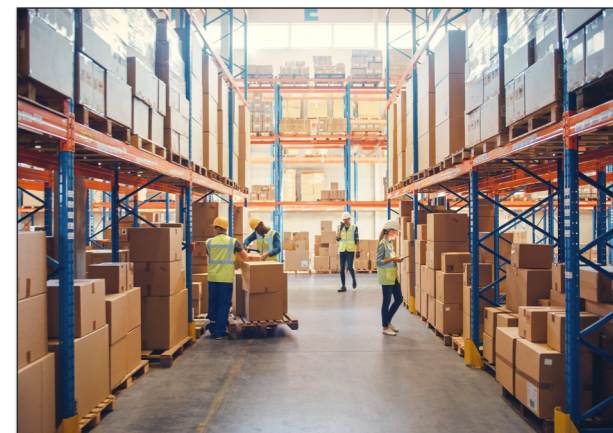
Emulations

With more than 40 emulations (including line line matrix printer emulations) on board like IGP/VGL, Epson ESC/P, Ansi Genicom, CODE-V, MT-600, IBM Proprinter PCL5, PDF and IPDS it is easy to replace existing (line) printer "plug-and-print". For further technical information, please refer to the respective product data sheet.

Individual Firmware Adaptation

If a „standard“ Microplex printer does not meet the needed requirements to fit into one specific application or should there be any special requests, we are always able to customize our firmware and make the printer work within the application.

- Adaptations to the respective system environment
- Adaptation of emulations for 100% compatibility with the application
- Hardware modifications of the printer



Microplex printers integrate seamlessly into existing applications and increase the efficiency of your workflow.