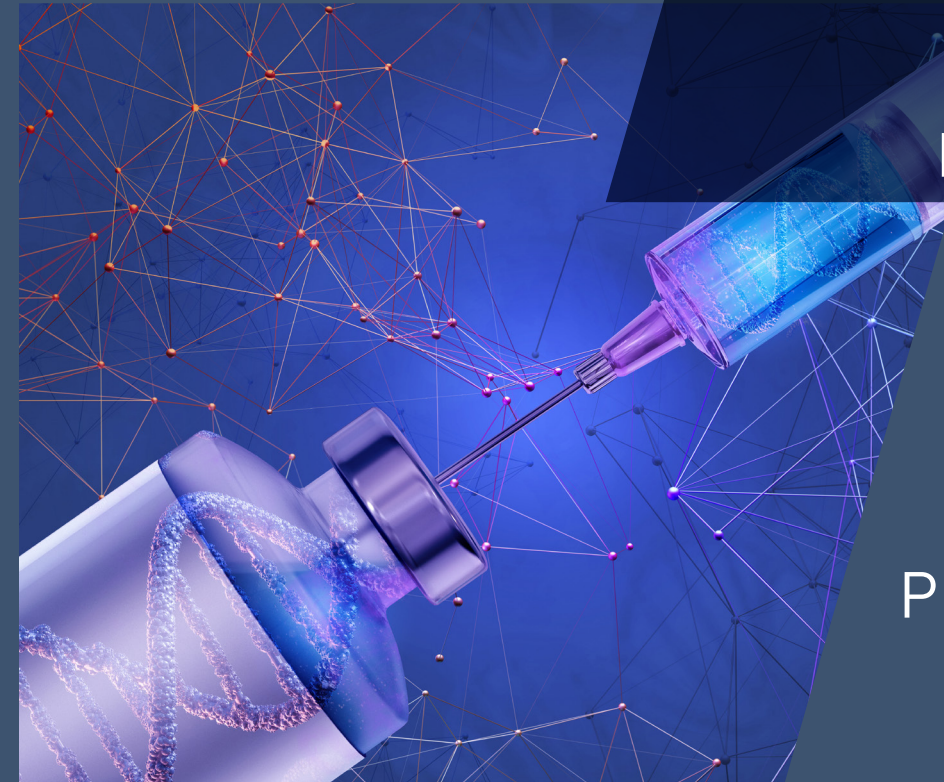


PRINTING SOLUTIONS FOR THE HEALTHCARE SECTOR



PRINTING TECHNOLOGIES
ENGINEERED IN GERMANY



PRECISE AND SAFE PRINTING IN MEDICINE AND PHARMACY

Your Microplex Partner:

FIELD OF APPLICATION

- Labeling, 2-color
- Barcode labels
- Administration documents and special formats
Pharmacy

HIGHLIGHTS / FEATURES / SPECIAL ATTRIBUTES

- Two-color printing for highly resistant labels
- High quality printing (600 dpi) at rated engine speed
- Reliable continuous forms and cut sheet printer
- SAP®- and IBM®-compatible (through PCL5 + JetCAPS as well as LAN-IPDS)
- Compatible to standard laser printer

EMEA
APAC
MICROPLEX PRINTWARE AG
Panzerstraße 5, 26316 Varel
Phone: +49 4451 91370
E-Mail: sales@microplex.de
www.microplex.de

AMER
Canada
MICROPLEX PRINTWARE CORPORATION
30300 Solon Industrial Pkwy Suite E, Solon, OH 44139
Phone: +1 440-374-2424
E-Mail: sales@microplex-usa.com
www.microplex-usa.com

The brand names referred to are the registered trademarks of the respective companies. All figures and details in italics and highlighted in color are optional. Technical data is subject to change. The information contained in this specification sheet refers exclusively to the described details and not to warranted characteristics. No guarantee is assumed. The information do not exempt from the obligation for inspection of each respective individual case. Version 10.01.2023



HIGH PERFORMANCE, IMPRESSIVE COST EFFECTIVENESS, PRECISE AND SECURE PRINTING



2-color labeling for hazardous warnings



logiJET TC8



High quality labeling



logiJET T4-2

Microplex in Healthcare Industry

Printers from Microplex for the medical or healthcare sector are mainly used where there is a need for fast output, robust and easy-to-use technology, and special requirements for the printing material.

GHS Compliant 2-Color Printing on Blank Material

The logiJET TC8 is a thermal transfer printer that is perfect for 2-color labelling of bottle labels, barrels, containers etc. It is equipped with two robust printing modules, which can be equipped with any color. So the needed stock of preprinted label materials is at its minimum, because blank labels can be used. Windows applications are supported by a Windows driver optimized for this system for all modern Windows versions.

With the logiJET TC8 you can print material with a width of 100 mm up to 222 mm and almost any length. This ensures that all relevant information can be stored in sufficient size on a label. Suitable combinations of labels and ribbons are available for a variety of applications.

A printing unit with two printing modules offers even more advantages:

- logiJET TC8:**
- Printing on blank material
 - Printing black and red in one go (GHS compliant)
 - Printing on materials ready for disinfection and sterilisation
 - Printing labels resistant against liquids, solvents, acids and scratches
 - Completely trouble-free paper handling
 - Up to 150 mm per second
 - SAP® and AS/400 compatible (through PCL5 + JetCAPS / LAN-IPDS)

Robust and Long Lasting Barcode Labelling for Medical Laboratory Materials

Unique labeling for i.e. blood bags, laboratory samples, patient records, X-ray images with serial numbers and barcodes from a wide variety of data systems is easy to implement with thermal printers from the logiJET and SOLID series. These printers support very efficient and cost-effective direct thermal printing for short-lived marking, as well as particularly robust thermal transfer printing for markings that need to be highly resistant to acids, alkalis, mechanical stresses, etc.

Microplex thermal transfer printers are also used for the long-lasting marking of medical containers and test tubes. The printers can process water-, oil- and alkali-resistant print media. A reliable assignment of the vessels through clear (barcode) marking is guaranteed.

The logiJET T4-2 for example understands more than 40 printer languages (emulations) at the same time. This allows you to process combined data streams, such as PCL5, ZPL, PDF® direct printing and IGP in one device.

- logiJET T4-2:**
- Printing mixed data streams on stickers, barcode labels and tags UHF RFID labels (optional)
 - Cutting individual labels with optional cutting knife (cutter)
 - Convenient further processing of labels thanks to peel-and-present module

Heel Prick Specimen Cards Serialized with Microplex Continuous Forms Printer

Continuous forms printing is important if there is a need to print on continuous paper according to audit requirements so **no alterations or changes** can be made.

The Microplex continuous printer range including the SOLID F40, SOLID 60E-2, SOLID 85E and SOLID F140 can handle various types of media. Even sensitive pre-printed media can be processed. The material must be suitable for printers with flash fusing. No pressure is applied to the materials, leaving the previously applied test pads intact.

The Microplex continuous printers process this material reliably and without errors. This means that print batches of serialized test patterns can be produced without interruption. The loss-free printing and operation of the Microplex continuous printer also enables the production of smaller runs.

- SOLID F140:**
- Print speed of 5.000 lpm at 6 lpi
 - 18 inch paper width, 17 inch printable
 - Material-friendly cold fusing (flash fusing)

Continuous Card Board Printing with SOLID 45ET

One application example is the use of our SOLID 45ET for the daily printing of meal guide cards. This requires a reliable handling of thick media as well as the trouble-free printing on continuous material and separation with a cutting knife. The data for putting together the patients' meals is transmitted digitally several times daily. The informations, which includes the individual composition of the patients' menus, is printed on cards and assigned to the respective tray. The kitchen staff can thus compose the menus for the patients on the basis of these menu cards.

- SOLID 45ET:**
- 300 mm / second print speed
 - 8 inch material width
 - Power cutter for thick material
 - Robust metal housing for harsh operating environment

Administrative Documents of Different Sizes

With the SOLID 52A4 you gain a versatile cut-sheet laser printer for administrative printing tasks. It can handle a variety of different paper formats in one device. From A6 formats for recipes to A5 formats for e.g. sick notes up to A4 formats for reports etc. can be kept in one printer at the same time. The correct format is drawn from one of the paper cassettes as required.

- SOLID 52A4:**
- Many different paper sizes supported in one printer
 - A6, A5 and A4 size paper feed from internal cassettes
 - Print speed up to 52 A4 pages per minute
 - Optional WIFI and PDF® direct printing

Customized Firmware Adaptation

Our in-house product development and our product support with short communication channels guarantee individual and customized adaptation to the requirements of the application in cooperation with our customers.

- Adding possible new standards or barcode technologies
- Emulation adaptations to fully support the application print data
- Customization depending on application



Heel Prick Specimen Cards



Meal Guide Cards



Administrative Documents

Here medical applications are executed quickly and reliably with Microplex printers.